



SURVIVAL TECHNOLOGY SOLUTIONS FOR THE SHIPPING INDUSTRY

Trusted to protect lives





CONTENTS

4

Trusted to
Protect Lives

5

Partnering
With You To
Deliver More

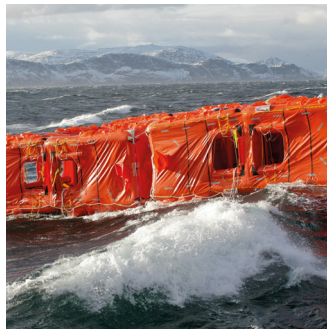


6

Head Start To
Maritime Safety
For New Builds

7

Customisable
Dry Dock
Management
Solutions



8

Fire Systems



12

Survitec Essentials

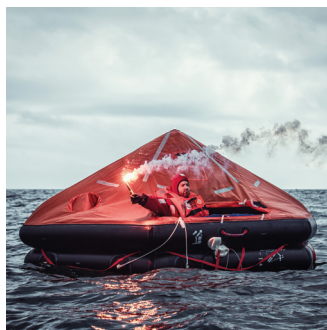


14

The Agreement
Advantage

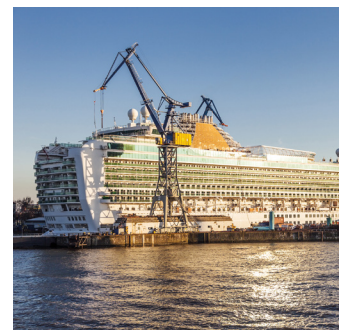
15

RaftXChange



16

Lifeboat Inspection
402



18

Pioneering Lifejacket
Design



23

Immersion Suits

 **survitec**
SURVIVAL TECHNOLOGY

TRUSTED TO PROTECT LIVES

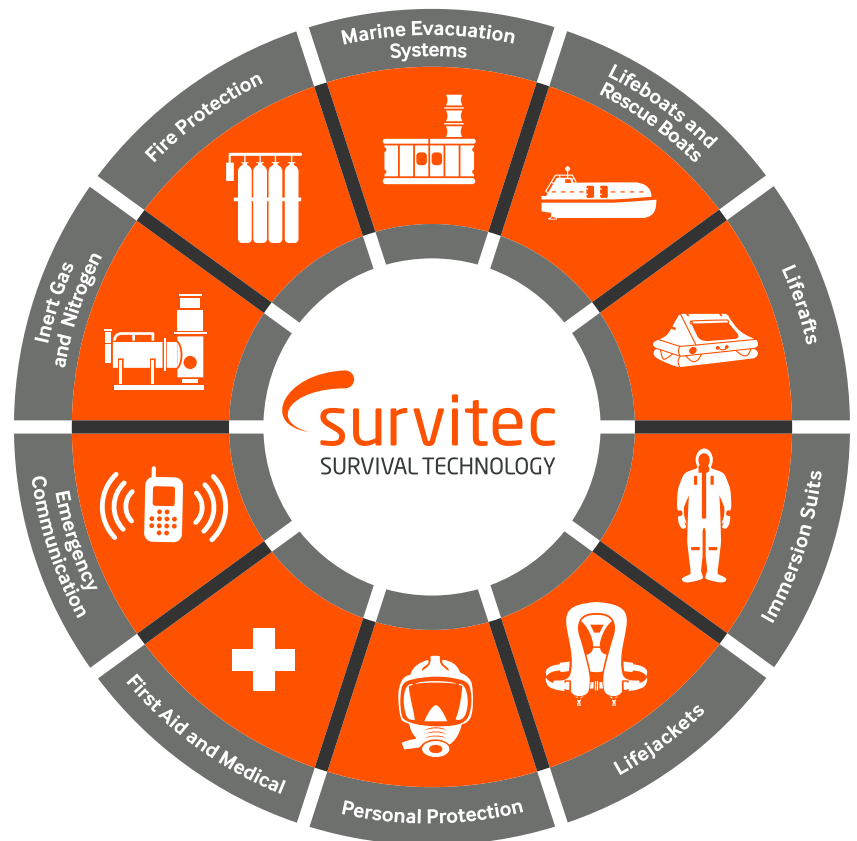
Pioneering Survival Technology to protect your vessel and seafarers

Survival. Technology.

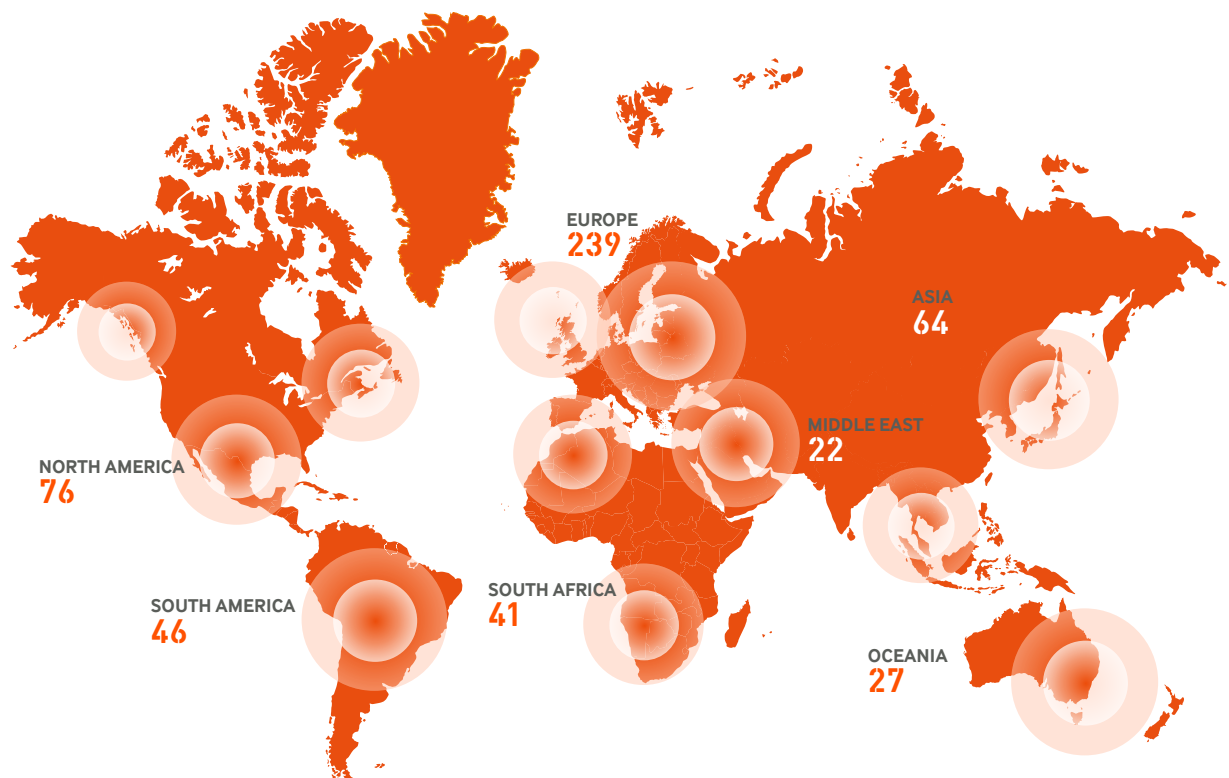
We are pioneers of Survival Technology that keeps you safe when your life depends on it. Our survival craft technology, wearable survival equipment and fire solutions are supported by our community of 3,000 experts across 96 countries.

We partner with our stakeholders to provide trustworthy solutions that reduce risk and help save lives.

Protecting over 1 million lives every day.



World's largest Survival Technology footprint



PARTNERING WITH YOU TO DELIVER MORE

Everything you need, everywhere you need it

Our extensive portfolio, coupled with our global footprint, ensures your vessels have the equipment you need to keep safe in an emergency

With more wearable survival equipment, fire solutions, survival craft technology and service stations around the world than our nearest competitor, nobody can offer better last-mile global coverage than we can. We are determined to use our size and strength to take your safety in a different direction – one that delivers greater benefits to your business.

Whether your requirements are for one-off product sales or complete safety asset supply and management, our dedicated commercial shipping teams are always ready to listen to your challenges and are on hand to offer a comprehensive solution, built for your business.

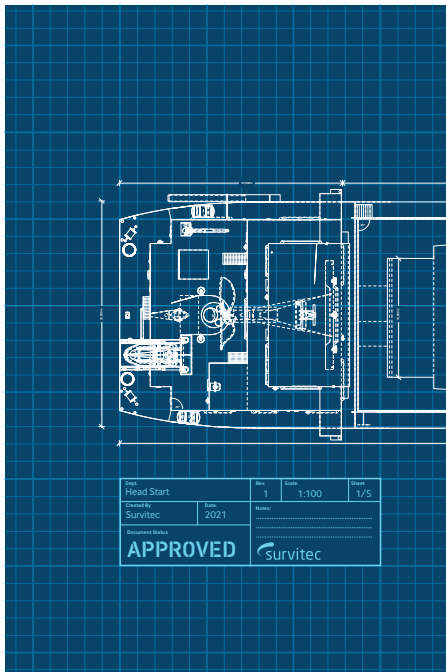


HEAD START TO MARITIME SAFETY FOR NEW BUILDS

Setting you on course for a lifetime of safety at sea

From planning, through construction, to commissioning and beyond, we aim to deliver an unparalleled, safety-first service to set up your vessel for a lifetime of safety at sea. We work closely with research institutions, regulatory bodies and class societies to keep abreast of industry trends and legislative requirements and to stay at the forefront of innovation in survival technology.

As a result, you can depend upon us for up-to-the-minute advice and recommendations around compliance and a full range of high-quality, SOLAS-compliant safety equipment. Plus, once your vessel is operational, an unrivalled global network to keep your crew, ship and cargo safe throughout many years at sea.



Planning the build:

Expert consultancy and advice.

Our technical expertise centres can identify the most appropriate solutions to afford maximum protection for your cargo and crew while also allowing for the daily routines and commercial operations of your vessel.

During the build:

Dedicated new build teams close to the shipyards.

From supplying the initial engineering drawings, to providing technical support during installation and commissioning, our local teams are close at hand to liaise with the yards and facilitate your build.

After the build:

Superior through-life support.

We offer a range of options to suit your needs, from “on demand” repairs, to fixed price agreements, to fully-managed safety contracts for personalised assistance with due date management and proactive service scheduling.

CUSTOMISABLE DRY DOCK MANAGEMENT SOLUTIONS

Going beyond compliance, to help you achieve more

Our global team is dedicated to bringing the industry's most advanced solutions to market, and our dry dock management offering is no exception. Designed specifically for owners and operators of commercial vessels, we recognise that all operator needs are different; we have therefore designed a dry dock management solution that is fully customisable.

- ✓ **Simplify your compliance** – a personally managed service, tailored to your needs
- ✓ **Cover all your requirements** – work with one supplier, one bank, one currency
- ✓ **Access global coverage** – planned servicing around your schedule
- ✓ **Avoid costly delays** – leverage our global service network for unanticipated work



FIRE SYSTEMS

Failsafe protection for your crew and vessel

As one of the leading fire solutions providers for the maritime industry, we offer a range of high-quality, SOLAS-compliant fire systems to afford maximum protection for your crew and vessel whilst also allowing for the daily routines and commercial operations of your ships. We're also working hard to harness digital technologies to help you with all aspects of fire safety, from monitoring protected spaces for early detection of fire and rapid release of fire systems; to providing remote support and technical assistance in diagnosing faults and optimising operations; through to assisting with routine maintenance. And of course, we're always here to provide ongoing crew training if required.

NFF XFLOW® Water Mist System

Our Novenco Fire Fighting (NFF) Water Mist Solutions can be applied for total flooding, local application firefighting (LAFF), accommodation areas, galley (Deep Fat Fryers) and ducts. Importantly, our solutions are versatile, giving you the option to easily integrate all systems into one. The secret to the effectiveness of our NFF XFlow technology lies in the unique Xflow® water mist nozzle which circulates a combination of fine water droplets and water mist. This suppresses the supply of oxygen and absorbs the heat to extinguish fire quickly, whilst also using less water, to give you optimal system performance. Plus, it can be activated immediately, without the need to evacuate first.



Inergen® Clean Agent System

We're making extinguishing fires in enclosed spaces more efficient, with solutions that can be deployed quickly and effectively with minimal risk to your crew, equipment and the environment. Our Inergen® system is a fire extinguishing system specially designed for enclosed spaces. Inergen® is a clean agent that extinguishes the fire by reducing the oxygen level in the protected space, without compromising your health and safety. This system is especially suited for control rooms, electric switchboard rooms and rooms with sensitive equipment. It is often used as a complementary product to water mist or foam in water sensitive areas and is also very effective for galley ducts fire protection.



1230 Clean Agent System

Our 1230 system is an alternative to traditional fire extinguishing systems that contain components such as Halon and CO₂. This total flooding system is a high quality, compliant fire extinguishing system using a clean agent that is both environmentally friendly and harmless to people. It is the perfect choice for rooms with sensitive equipment such as pump rooms, compressor rooms and control rooms and for vessels where space is limited.



Deep Fat Fryer (Wet Chemical) Extinguishing System

Our Deep Fat Fryer Extinguishing System is a self-contained, automatically-operated fire extinguishing system that provides fast and effective protection against fires in deep fat vats. It can protect one deep fat fryer (50 litres, 800mm x 400mm), or up to three deep fat fryers (each 27 litres, 400mm x 360mm). Our system uses water with foam concentrate to form a film which separates the flammable liquid from the supply of oxygen to extinguish the fire quickly and prevent reignition, ensuring the highest protection for your passengers and crew.



High Expansion Foam System

Our High Expansion Foam Fire Extinguishing System provides extremely effective protection for machinery space applications (especially with alternative fuels such as methanol/ ethanol) and can be installed as a total flooding solution for the entire machinery room or for individual compartments. This quick-activation system is designed to minimise fire and heat damage to equipment and structures. It is easy to install and operate and contains no hazardous decomposition products.



High Pressure CO₂ System

Our CO₂ system is a total flooding system for enclosed machinery spaces and galley ducts. Trusted by hundreds of vessels worldwide, our system is proven to be fast and effective and requires minimal maintenance making it your first choice for a reliable and cost-effective solution.



Dry Chemical Powder System For Bunkering Stations

This is an ideal solution for bunkering stations on dual fuelled LNG vessels. If flammable gases ignite, our Dry Chemical Powder fire extinguishing system (DCP system) breaks down the chemical reaction within the fire and suppresses the flames almost immediately. Our system is an effective, non-toxic solution that is harmless to your crew and the environment.



survitec | ESSENTIALS

Our Survitec Essentials range has been developed with your regulatory requirements in mind, and the key products will ensure safety at sea for your crew and vessel.

Our range covers over 70 essential safety products, including the spares and accessories you need to stay safe and compliant.

Key product categories include personal life saving appliances, fire extinction and personal protection products. Survitec Essentials products are available in 12 key strategic selected ports, at defined lead-times, offering predictable availability worldwide.

If a product is included within our Survitec Essentials range, you can be rest assured, it is the product you need, where you need it.

Convenient access

- Full range of Fire and LSA products
- Global availability
- One point of contact near your office
- One currency and one bank

Consistent quality

- Same consistent, high-quality products available world-wide
- Simpler regimes for training, servicing and spare parts
- Fixed predictable prices

Value for money

- Rigorously tested for marine environment
- World leading brands with high performance reputation
- Premium and budget options available



Key ports & leadtimes

The following map provides our customers with a clear overview of the key ports Survitec Essentials' range of products are available from and the guaranteed lead-times at each port.



THE AGREEMENT ADVANTAGE

What to expect when you sign up to an agreement with us

Many customers choose to partner with us by signing an agreement. This delivers benefits that go beyond the standard, adding predictable pricing and budgeting, personal account management, due date monitoring and port priority.



Fixed, predictable prices

We can help you spread the costs and budget more easily. Whether it's a fixed price agreement or a full safety management contract.



Port priority

The risks of delays in port can be costly for your organisation. As an Agreement customer, port priority means your vessels come first and your sailing schedules are protected. Your continuing compliance and ability to trade are always prioritised.



Single point of contact

You will have a single point of contact throughout your agreement, with an experienced Account Manager backed by a dedicated customer service team who know your fleet and understand your needs. We coordinate multiple suppliers and handle all transactions in one currency and through one bank account to save you time.



Proactive due date management

We manage the entire compliance schedule for you. We map the safety equipment on board your ship, alert you to upcoming due date requirements and schedule servicing in the most convenient ports.

Everything you need. Everywhere you need it.

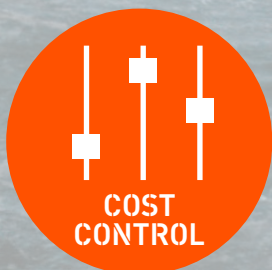
Why choose a liferaft rental and exchange model?

By choosing a liferaft rental and exchange contract with Survitec, there is no capital investment required.

We offer a straightforward administration approach with a key account manager, backed up by an experienced global customer service team, facilitating all the preparation and logistics of your liferaft exchange. Above all, you can count on Survitec to provide you with complete peace of mind.

KEY BENEFITS

- ✓ Liferafts are replaced with newly serviced, fully certified liferafts of same capacity and type
- ✓ Comprehensive network, ensuring availability in all key ports worldwide
- ✓ Supports a vessel's short port stay
- ✓ Reduces the amount of handling required
- ✓ Offers a full guarantee for the duration of the rental period
- ✓ Facilitates both an overall cost reduction and better cost management
- ✓ Less transportation required
- ✓ Highly skilled technicians, ensuring rafts are always in compliance with regulations



COST
CONTROL



FLEXIBILITY



WORLDWIDE
COVERAGE



ASSURANCE



SIMPLICITY

LIFEBOAT INSPECTION

Regulation simplified, global compliance delivered

Our Lifeboat Inspection 402 allows your vessels to spend less time in port and your fleet managers and administrators save the time and effort of arranging multiple inspections with potential associated travel costs. Moreover, with our solution, there are no hidden costs or extra requirements such as Original Equipment Manufacturer (OEM) certification.

1

Annual and 5-year inspections meeting SOLAS Chapter III and IMO MSC.402(96) requirements

2

Authorised multi-brand inspection covers all lifeboats, rescue boats, davits and hooks

3

All work carried out to consistent global standards by our multi-skilled certified Technicians

4

Fire systems and personal lifesaving equipment can be included


5

Unrivalled global network with 60+ Flag authorisations and Global Class approvals

6

Single point-of-contact streamlines administration and logistics

Since the IMO MSC.402(96) mandate of 2020, you are no longer obliged to use OEMs or their agents for your commercial fleet lifeboat inspections. As a result, regardless of the make and type, you can have your lifeboats, davits and accessories inspected, repaired and certified through our Lifeboat Inspection 402 programme.



7 Harmonised due dates reduces visit frequency and cost, with proactive due date monitoring and alerts enhancing compliance

8 Repair, refurbishment or replacement recommendations provided on completion of inspections

9 Some repairs and refurbishments can be actioned out on-the-spot to save time and cost of repeat visits



10 Supply and commissioning of new or replacement lifeboats, rescue boats, davits and hooks

11 Fixed price agreements help control costs

12 Port and service priority worldwide eliminates delays

PIONEERING LIFEJACKET DESIGN FOR ALL VESSEL ROUTES

Whether you're looking for lifejackets for constant wear or abandonment, lifejacket accessories, or anything in between - we have everything you need to stay safe and compliant.

Our portfolio uses technology advancements and expertise gained over 60+ years in the design, manufacture and supply of lifejackets for an expansive range of commercial applications. By uniting our innovative ergonomic designs with quality materials, we provide you with the winning formula to ensure your workforces' safety is taken care of and your regulatory requirements are exceeded.



PREMIER COMPACT

SOLAS approved abandonment lifejacket

Our Premier Compact provides you with the crucial, continued safety and performance features of the original Premier and delivers improved storage options due to its significantly reduced volume and easy-stack profile. A unique design of the neck opening allows for increased wearer comfort, while durability is assured by the use of tried and tested quality components.

- ✓ MED approved
- ✓ Efficient use of storage space at only 17.4l - 49.2% smaller alternative to the original premier
- ✓ Easy pull-out pillow for intuitive donning
- ✓ A foam cut out for the buckle ensures easy stack-and-stow, no folding or manipulation required
- ✓ Sacrificial stitch at the end of the waist belt to allow it to run free if caught, helping to prevent snag hazards
- ✓ Improved comfort and fit around the neck with re-engineered neck aperture
- ✓ Buddy line and whistle stored in recessed pocket
- ✓ High visibility fabric, foam and webbing are a proven success in the field
- ✓ Waist belt designed to fit chest girth of 1750mm
- ✓ Clear id windows for vessel identification



SEACREWSADER 275N 3D

SOLAS approved wipe clean lifejacket

Designed for busy commercial environments, the Seacrewsader 275N 3D is the right choice for workers based on vessels operating under SOLAS regulations who are looking for a durable and easy-to-clean lifejacket. Suitable for constant wear and abandonment, the integrated Fusion 3D technology ensures the lifejacket sits off your neck to give unhindered freedom of movement.

- ✓ Durable wipe clean cover
- ✓ EXOLOK provides a clear indication if the cylinder moves, becomes unscrewed or is tampered with
- ✓ Foam padded cover for added impact protection
- ✓ Ergonomic Fusion 3D design for maximum comfort
- ✓ Modular cover system allowing you to change the cover to suit your needs
- ✓ Unique bladder distribution for comfort and enhanced in-water performance
- ✓ 2x inspection zips to show inflation mechanism and beacon status

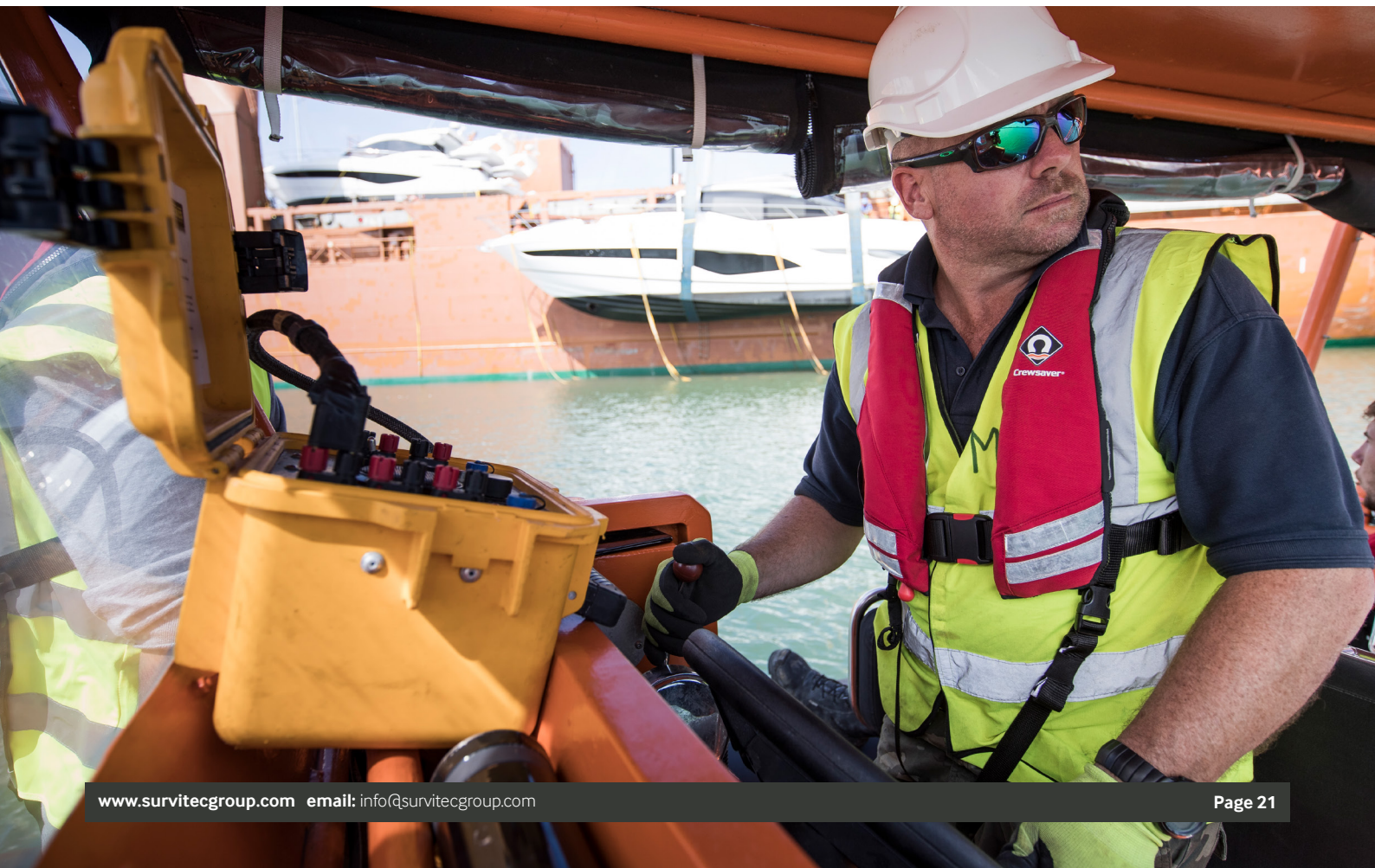


CREWFIT 275N XD

ISO approved lifejacket

A high performing, versatile and unrestrictive ISO approved lifejacket that offers you protection when working on or around water. The outer cover can easily be replaced or changed to suit your needs and the EXOLOK system provides increased security for the lifejacket gas cylinder.

- ✓ Heavy-duty 500D outer cover is ideal for busy commercial working environments
- ✓ EXOLOK provides a clear indication if the cylinder moves, becomes unscrewed or is tampered with
- ✓ Ergonomic Fusion 3D design for maximum comfort
- ✓ Intuitive twin waist adjusters to ensure a correct fit
- ✓ Supplied with dual crotch straps
- ✓ Dual lifting becket to aid recovery
- ✓ Indicator window fitted with a protective panel to prevent damage
- ✓ Unique buoyancy distribution helps turn you quickly when in the water
- ✓ Available in Navy and also in wipe clean and fire retardant variants



LIFEJACKET SERVICING

Purchasing your safety equipment is only the beginning of your relationship with us.

Safeguarding lives through high quality safety equipment is at the heart of everything we do. We have a strong reputation for reliability of service and workmanship. Our work is always of a high standard and our technical ability is continuously being upgraded with the latest equipment, facilities and training.

When organising your lifejacket servicing you should ensure you're using a fully approved service station for the brand of lifejacket owned. Authorised service centres will have access to the correct service manuals for your lifejacket and would have undergone all of the relevant product training. These highly technical documents are a key tool for the lifejacket service engineer. All lifejackets serviced at an approved Survitec service station will be subjected to a rigorous inspection by a fully qualified technician to ensure it is fit for purpose and maximise its performance if needed in an emergency.



Important: If you are operating under SOLAS regulations, professional lifejacket servicing is a legal requirement and must be performed annually

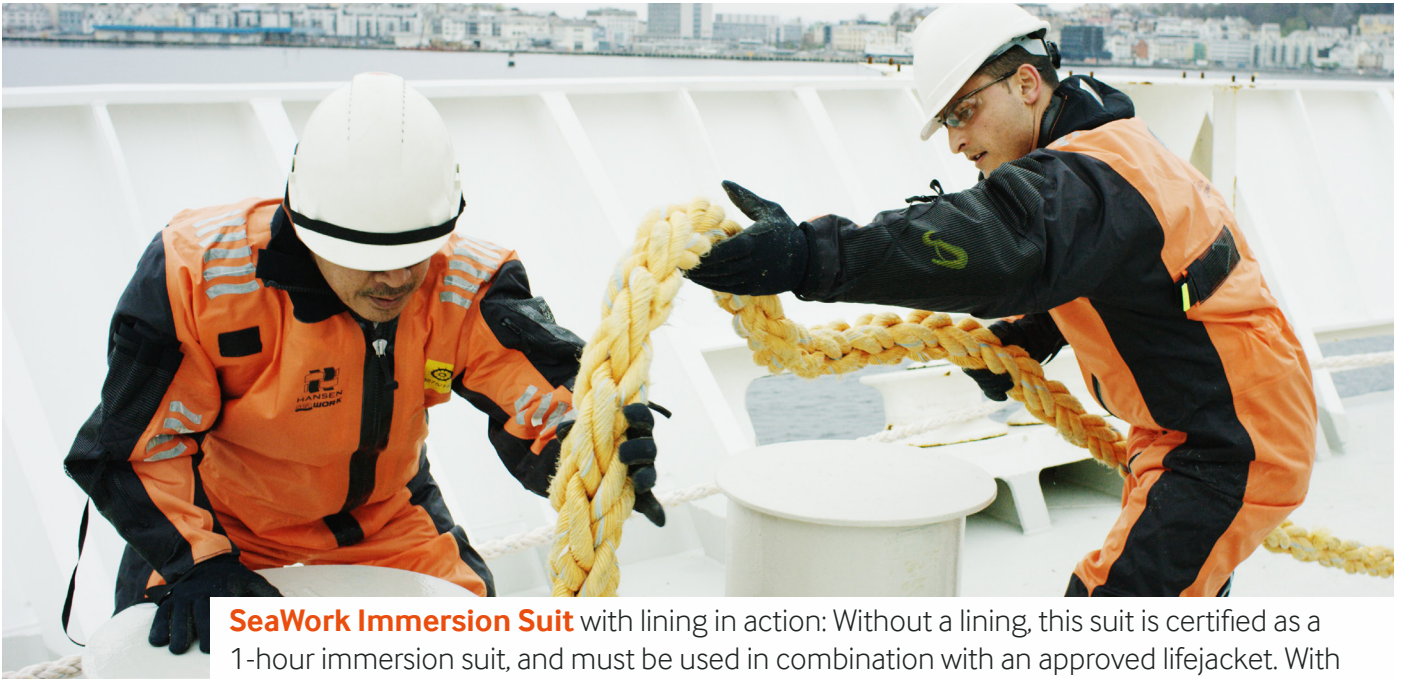


Find your approved service station here



FIRST CLASS IMMERSION SUITS

Through our leading cold-water suit specialists, Hansen Protection, we provide a wide range of constant-wear and abandonment suits for all types of work and scenario.



SeaWork Immersion Suit with lining in action: Without a lining, this suit is certified as a 1-hour immersion suit, and must be used in combination with an approved lifejacket. With lining, the suit is approved as an Anti Exposure Suit (AES) and insulated 6-hour immersion suit. When used as an AES-suit a lifejacket is not required.

SeaWork Immersion Suit

- SOLAS approved
- Developed in cooperation with users and is intended for maintenance work in exposed areas aboard ships and on offshore installations
- Durable and flexible, next generation immersion and anti-exposure suit (AES) for use in severe conditions

SeaEco Immersion Suit

- SOLAS approved
- Manufactured in 5mm flame-retardant neoprene
- Ideal for vessels destined for cold water regions and that already have certified lifejackets on board
- May be vacuum packed for extended service intervals (maximum 10 years)

SeaPass Passenger Immersion Suit

- SOLAS approved
- Can be vacuum packed to take up minimal space on board
- May be vacuum packed for extended service intervals (maximum 10 years)

SeaBreeze CTV Immersion Suit

- SOLAS approved constant wear immersion suit
- Immersion suit for difficult and demanding environments
- Ideal for use on board merchant vessels and for transport to and from sea wind farms

CONTACT...

Our dedicated sales team at
info@survitecgroup.com



GET IN TOUCH

SURVITEC

4th Floor, 12 Finsbury Square, London, EC2A 1AS, United Kingdom

Email: info@survitecgroup.com

www.survitecgroup.com

Copyright Notice

© Survitec Group 2022. All rights reserved.

Disclaimer

This document provides general information about Survitec and its companies, its products and services, and summarises general capabilities and offerings which we deem to be of relevance to our customers. Whilst Survitec has taken appropriate steps to ensure the accuracy of the information contained in this document, Survitec gives no warranty regarding the accuracy or completeness of such information.

This presentation was prepared to provide information and does not constitute a contract. Survitec reserves the right, without prior notice, to change, delete, supplement, or otherwise amend at any time the information, images, and offerings contained in this presentation, or other documents. Survitec shall not be liable for any loss or damage of whatever nature (whether direct, indirect, consequential or other) that may arise as a result of any third party relying on the information contained in this document (but nothing in this disclaimer excludes liability for death or personal injury arising from negligence or any fraudulent misrepresentation).

For further detailed information, prices, terms and conditions, customers should contact Survitec at info@survitecgroup.com

V2